

# *Historical Society of East Hartford*

## *Newsletter, March 2022*

---



### **PRESIDENT'S MESSAGE**

Historical Society of East Hartford members and supporters:

We trust that you are well, and following guidelines to stay safe and healthy.

We are moving forward with the Hockanum School project, the Brewer House and its rose garden dedication plan, the training of docents, the historical houses plan, HSEH inventory and cataloguing, etc. We are also trying to work with other town organizations and commissions to create activities and make things happen. These and future projects and ideas are in dire need of membership participation and involvement if the society is to survive and prosper. If you are able to devote some time to lend a helping hand, please contact us and let us know.

We are starting to furnish the Brewer House with period furniture and other items from the 1870s to the 1920s. If you have any items from this period that you would like to donate, please let us know. Also, stop by on Tuesdays between 9:30 and 2:00 to see the progress. Home Depot has offered to donate new carpeting for the stairs and foyer. We have picked out the color, and are awaiting word for when installation will occur.

Mayor Michael Walsh is working with us to restore and renovate town owned historic buildings. We are working on a plan to make the corner of Main Street and Naubuc Avenue (where the Brewer House and Hockanum School are) the gateway to the historic district. Again, your energy, ideas, and enthusiasm can make this plan a reality.

Please contact us if you have any ideas, concerns, interests, suggestions to offer, or would like to volunteer some time. My phone is 860-528-4989

Respectfully,

*Steven Strange, President*

### **HISTORICAL SOCIETY MARCH 16TH MEETING AT THE SELDEN BREWER HOUSE**

Members are welcome to join us at our March 16th, 2022 Historical Society meeting at the Selden Brewer House starting at 2pm. I'm optimistic that later this year we will again have meetings that include guest speakers, programs and even some snacks and coffee. There have been some encouraging signs of pandemic restrictions loosening up country-wide. We hope to once again return to the Library but we will look at alternative locations in town if we have to.

Many of the items from the Thomas Dowd Collection that were donated to the Historical Society are still being accessioned by our dedicated volunteer staff. For me, the most fascinating find was locating my great, great grand-

parents from the pages of the 1870 Town of East Hartford census (right). Norman A. Burke was noted as a saloon keeper and the proprietor of the Burnside House. Norman and his wife Maria had three children. His son William later became a trolley car motorman in Manchester and East Hartford. He was the father of my paternal grandmother. The Brzezicki family of Tennessee who made this generous contribution available, have also been kind to us with several new memberships to the Historical Society.

Seventy-five percent of our Cultural Fund Operating Support Grant from Connecticut Humanities has been received in February. With these needed funds, we hope to furnish the Brewer House downstairs and set up some exhibitions that include many of our collections that formerly existed only behind closed doors. Later this year we would like to have limited opening hours where we could welcome visitors.

The Selden Brewer House is located at 167 Main Street, East Hartford and parking is available in the front lot. For any questions, you can call me at 860-568-2884 and please leave a message. I will return your call.

9		Charlotte	48	F	W	Farmer	
10		Edgar	16	M	W	Keeping House	
11		Mary	0	0	0		
12		George P	13	M	W		
13		Frank E	10	M	W		
14		Anna A	0	0	0		
15	22253	Anna A	6	F	W		
16		Forbes Adolant	49	F	W	Keeping House	1400
17		Pro E	27	M	W	Student	
18		Henry C	26	M	W	Paper Maker	
19		Corinth A	24	M	W	Paper Maker	
20		Warwick A	23	F	W	Silk Weir	
21		George S	14	M	W	Paper Maker	
22	22254	Norman A	32	M	W	Saloon Keeper	550
23		Maria	32	F	W	Keeping House	
24		William E	10	M	W		
25		George E	8	M	W		
26		Mary A	5	F	W		
27	22255	James Norton S	56	M	W	Farmer	2000
28		Nancy	62	F	W	Keeping House	
29		George A	22	M	W	Farmer	
30		Emmal J	29	F	W	Dress Maker	
31		Wincock Warren	22	M	W	Quiter	

**The Norman Burke Family data in the 1870 census of the Town of East Hartford.**

*Craig Johnson, VP, Program Chair*

## DOCENTS FOR THE MARTIN PARK BUILDINGS

As it stands right now we have only two docents left, myself and Craig Johnson, who give tours at the complex at Martin Park. We both have been doing this for many years every summer for the months of July and August.

I would like to extend an invitation to the Society's membership in the hopes that we could get others to consider helping out as tour guides. Craig and I would be willing to train in a very simple and succinct way.

Years ago there were more individuals who helped out so we could spread the docents out evenly in the summer and the responsibility was a shared one. We certainly hope that we do not have to discontinue this wonderful service created by Doris Suessman and her husband so very many years ago. If anyone is interested in accepting this invitation please contact me, Judy Hillmann, at my email address [judithhillmann@sbcglobal.net](mailto:judithhillmann@sbcglobal.net).

*Judith Hillman, Membership*

## VOLUNTEERS NEEDED FOR MAILINGS TO HISTORIC HOMES

We need volunteers to help serve on a committee to do a mailing to historic home owners in East Hartford. Please contact our president Steven Strange at 860-528-4989 if you would like to volunteer for this worthwhile endeavor. Please leave a message with your phone number should he not be available when you call. Perhaps one hour a week at the Brewer House at the convenience of those who volunteer. I thank you.

*Steven Strange, President*

## HISTORICAL SOCIETY JOINED IN COMMEMORATING ROGER OLMSTED REMEMBRANCE DAY ON FEBRUARY 22

**Roger Olmsted Remembrance Day**

This year marks the  
**77<sup>th</sup> Anniversary of the Battle of Iwo Jima**  
Join us in Remembering Roger W. Olmsted


**Tuesday, February 22, 2022**  
**East Hartford Town Hall Flag Pole**  
**740 Main Street, 10:00 a.m.**

- ★ Proclamation reading
- ★ Raising of the Iwo Jima Flag & TAPS
- ★ Wreath laying at his grave  
in Center Cemetery

**2LT Roger Wolcott Olmsted**  
September 28, 1920 – February 22, 1945  
Killed while serving bravely during  
The Battle of Iwo Jima

*Ceremony presented by:*  
Town of East Hartford  
Support Our Survivors of Iwo Jima & IJSA  
Historical Society of East Hartford  
Rochambeau Elms VFW Post 2083

This event is part of the  
**Iwo Jima 77<sup>th</sup> Anniversary Virtual Reunion**  
For more information, contact Gary Roy (860) 810-8736  
or [SOSIwoJima@yahoo.com](mailto:SOSIwoJima@yahoo.com)



HSEH Members Marianne and Gary Roy submitted the following information on the ceremony honoring Roger Olmsted of East Hartford killed in WWII at the Battle of Iwo Jima:

“To remember and honor the life and sacrifice of Roger W. Olmsted, Support Our Survivors of Iwo Jima, the Historical Society of East Hartford and the Town of East Hartford are teaming up to declare Tuesday, February 22, 2022 as Roger Olmsted Remembrance Day.

“East Hartford Mayor, Mike Walsh, will present and read a Proclamation at the Town Hall flag pole followed by a raising of the Iwo Jima Flag. Immediately after, a wreath will be placed at Roger Olmsted's grave in Center Cemetery. The public is invited to attend the event which begins at 10:00 a.m. For details, please call Gary Roy at 860-810-8736.

“Other East Hartford town residents who participated honorably in the Battle of Iwo Jima and survived are Robert Bedard and Robert DeGroat.”

*HSEH Members Marianne and Gary Roy*





# The Thrill of Two High Speeds

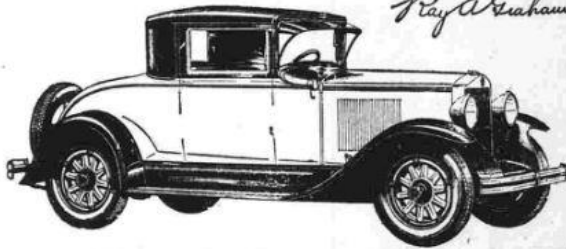
[[ Four Speeds Forward ]]  
[[ Standard Gear Shift ]]



The new Graham-Paige sixes and eights are distinguished by the thrilling performance of two high speeds, *standard* gear shift. With the time-proved, Graham-Paige four speed transmission—*fourth*, used most of the time, gives a new smoothness and swiftness; *third*, a quiet internal gear, provides rapid acceleration in traffic and up steep hills. The gear shift is standard—you start in second; first, in reserve, is instantly available but seldom used. You are invited to enjoy a demonstration.

Five chassis—sixes and eights—prices ranging from \$885 to \$2495. Car illustrated is Model 615 Coupe—six cylinder, 76 horsepower, 115" wheelbase, \$1195 (special equipment extra). All prices at factory.

*Joseph B. Graham  
Robert C. Graham  
Ray A. Graham*



## Crawford Auto Supply

101 Center St., South Manchester

East Hartford at Church Corners

# GRAHAM-PAIGE

(1204-B)

DOES ANYONE HAVE STORIES TO  
SHARE ABOUT THIS BUSINESS  
THAT ONCE STOOD ON CHURCH  
CORNERS?

Historians and genealogists now have The [Manchester Evening] Herald archives online. Here's an East Hartford car ad. It's from the 3/15/1929 Herald, found here:

[http://www.manchesterhistory.org/News/Manchester%20Evening%20Herald\\_1929-03-15.pdf](http://www.manchesterhistory.org/News/Manchester%20Evening%20Herald_1929-03-15.pdf)

Or browse all the issues here:

[http://www.manchesterhistory.org/News/NEWS\\_YearsIndex.html](http://www.manchesterhistory.org/News/NEWS_YearsIndex.html)

*Member Susan Barlow*

## **Historical Society of East Hartford**

**Mail:** PO Box 380166, E Hartford, CT, 06138-0166

**Phone:** 860-528-0716

**Email:** [webmaster@hseh.org](mailto:webmaster@hseh.org) put 'ehhs' on subject line

**Web site:** <http://www.hseh.org>

**Membership:** 860-528-0716, Sept 1-Aug 31

indiv \$20, 1 address \$25, student \$10,

patron \$50, lifetime \$250

mail check, name, addr, email to PO Box above

**Deadline** May Newsletter – May 1, 2022